

Ready to welcome  
you to the MAC family

# Thankyou

For more information, please contact:

[careers@macplc.com](mailto:careers@macplc.com)

[www.macplc.com](http://www.macplc.com)



#### HEAD OFFICE ADDRESS

MAC Clinical Research  
Clinical Research Centre.  
Kaman Court 1 Faraday Way  
Blackpool Lancashire FY2  
0JH. United Kingdom.



MAC

MAC Clinical Research

# Student Experience Placements

[www.macplc.com](http://www.macplc.com)  
[www.researchforyou.co.uk](http://www.researchforyou.co.uk)

# COMPANY DETAILS

MAC Clinical Research is one of Europe's largest independent Clinical Research Organisations (CRO). Owing a network of dedicated Research Sites and providing extensive reach, MAC has offices within the EU and US. Our clinical research organisation is committed to the recruitment and conduct of clinical trials and full-service delivery through our fully owned Research Sites and staff.

With eight dedicated Research Sites across the UK (including seven late phase and one MHRA Accredited Phase 1 Unit) MAC has ease of access to over 20 million patients in the UK alone.



## OUR TEAMS

MAC employ over 350 staff, all using MAC's operating, staff training and quality systems. We employ an experienced team of staff, including those with health, scientific and technology backgrounds, to creative talent in the marketing team, systems, data, stats and many other specialist roles.

We employ an experienced team of staff, including those with health, scientific and technology backgrounds, to creative talent in the marketing team, systems, data, stats and many other specialist roles.

Although MAC is a growing organisation, it remains committed to being a friendly, supportive and inclusive work place.



We never forget our core value lies within our team and at all times we strive to exceed each other's expectations.

Our mission is to serve with honesty and integrity to make an outstanding contribution to human health.



## PEOPLE

To put the needs and wellbeing of people first



## INCLUSIVE

To never forget our inclusive culture and the heritage of our Organisation



## SERVICE

To work together to deliver exceptional service



## PROGRESSIVE

To be forward thinking and embrace change for the benefit of our collective futures

### CLINICAL RESEARCH SERVICES

Project Management  
Clinical Operations

- Site Monitoring
- Trial Feasibility
- Site Management

Pharmacovigilance  
Regulatory Affairs  
Biometrics

- EDC
- Data Management
- SAS Programming
- Biostatistics
- Medical Writing

Vendor Management  
Randomisation and  
Trial Supply  
Management  
Digital Solutions

- Electronic Patient-reported Outcomes (ePRO)
- eConsent

### SITE AND PATIENT SERVICES

Patient Recruitment  
Patient Retention  
Global Investigator Sites  
Network of Fully-owned Investigator Sites

- Sleep Laboratory
- Early Phase Unit
- Psychedelic Testing Suites
- Phase I-IV Research Facilities
- Memory Assessment Research Centre

### PHARMACEUTICAL SERVICES

GMP Pharmacy  
Manufacturing  
In-house Pharmacy  
Laboratory Services

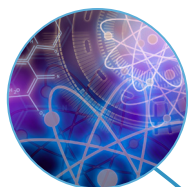
Global Clinical Supplies  
QP Release  
IMP Management and  
Distribution

### SCIENTIFIC SOLUTIONS

PK and PK/PD Analysis  
Human Models of Disease  
Electrophysiology  
Neurophysiology  
Psychological Assessments  
Cardiovascular Assessments



## WHAT MAC OFFER



Students studying for science-based degrees will be accepted to one of our seven clinical trial sites. There will be some degree of flexibility with regards site base.



Students will gain the most benefit and experience by following the broad job description of a Clinical Trial Assistant (available on request). This will enable them to embed fully into ongoing work, developing various competencies for example; blood sample preparation, ECG, clinical and neurophysiology rating scales, understanding research protocols, GCP, customer service and patient care.



We require students who will be handling blood products to have a HepB vaccination - we can cover this cost and vaccinations are available at most large pharmacies by appointment.



Students will be assigned a training supervisor who will support their development, offer feedback and liaise with the university as required. This will be a senior member of the local team who can take responsibility for the progress and well-being of the student.

### ADDITIONAL OFFERINGS:

- All students will follow our thorough induction process with some mandatory training elements to enable them to work within our highly regulated industry.
- Placements in our marketing, statistics, business development and project management teams can also be considered on request.
- Public liability insurance is provided.
- Placements vary from unpaid 'observation' placements to placements funded by the Universities, or paid internship offered at minimum wage rate for placements extending from 6 months to 1 year.
- Students on internship placements will have sickness and holiday entitlement in line with other MAC staff, but will not qualify for additional benefits such as private health insurance or pay adjustments for any shift pattern working that is required.



### PATRONS OF LANCASTER UNIVERSITY



### MAC IS THE FOUNDING CORPORATE PATRON OF LANCASTER UNIVERSITY

We are proud of our close links with the University and are committed to continuing to support the training and development needs of this and other centres of education. We have supported PhD, MSc and BSc students and provide various work-based placements funded both by the University or via our internship scheme.

We have developed an effective training programme to provide students with a positive work experience to enhance their classroom-based studies, and an introduction to how their degree can be translated to a career. In return, our workplace benefits from the presence of students who invigorate the various departments with their fresh ideas

Our student nurse placement scheme is in development with Manchester University and invitations to lecture at various Universities are frequently accepted by our experienced scientific team including annual participation in the Biomedical Science Department 'Innovations in Biosciences' lecture series.

"My time working at MAC Clinical Research has been amazing. I have developed a wide range of skills whilst working with patients and in the lab. I have developed an understanding of clinical research that will be vital into a future career in research. I highly recommend this placement to any prospective student" - Brandon, Biomedical Science

"I have thoroughly enjoyed working for MAC Clinical Research this year and I couldn't have asked for a nicer team to work with! Additionally, I feel as though the experience will be invaluable when searching for jobs after university. I would recommend this placement to anyone that is happy to carry out clinical, laboratory and administrative tasks." - Sophie, Biomedical Science